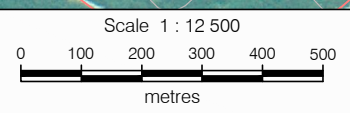


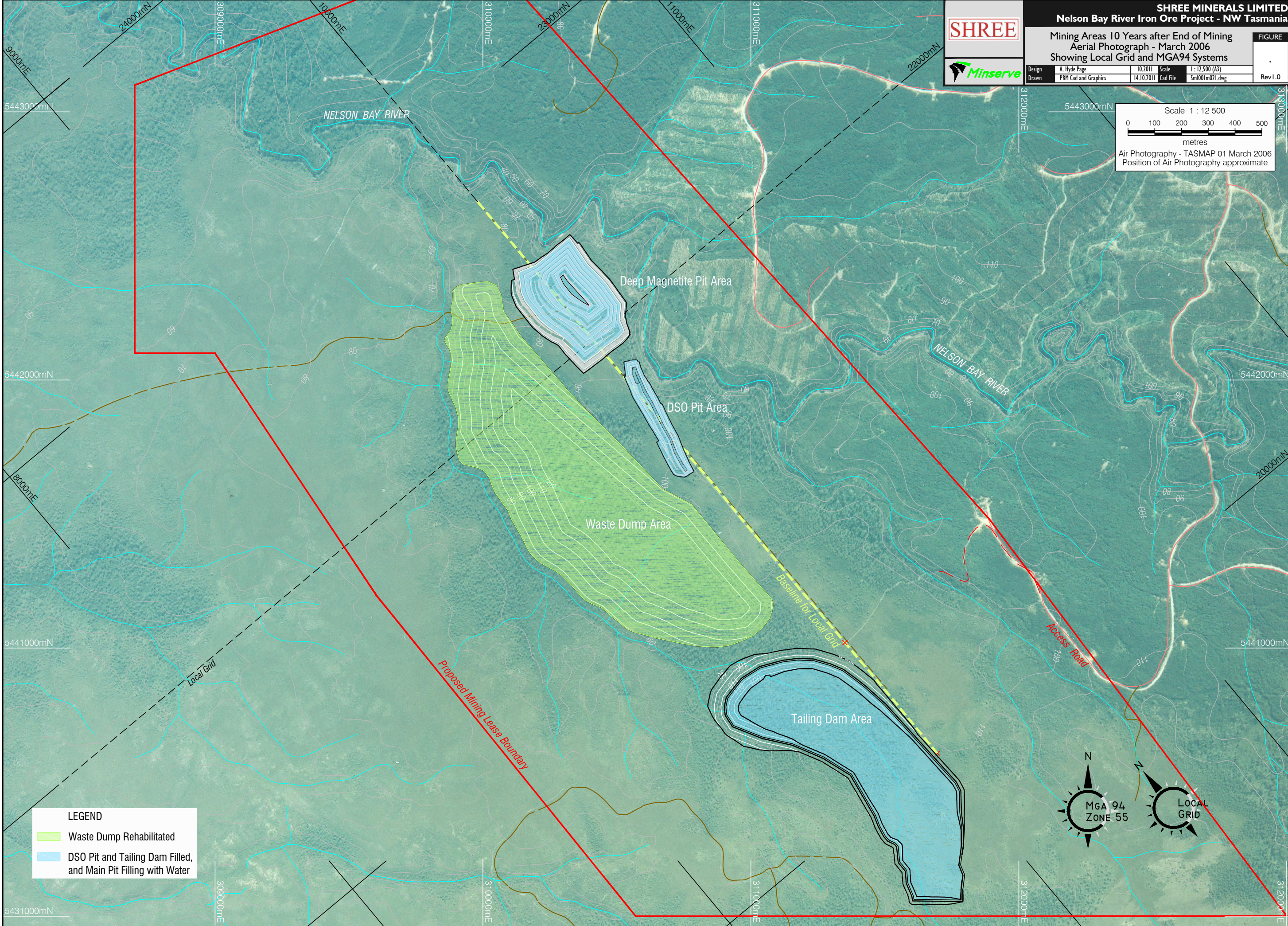
SHREE MINERALS LIMITED
Nelson Bay River Iron Ore Project - NW Tasmania

Mining Areas 10 Years after End of Mining
Aerial Photograph - March 2006
Showing Local Grid and MGA94 Systems

Design	A. Hyde Page	10.2011	Scale	1 : 12,500 (A3)	FIGURE .	Rev I.0
Drawn	PRM Cad and Graphics	14.10.2011	Cad File	Sm001m021.dwg		



Air Photography - TASMAR 01 March 2006
Position of Air Photography approximate



- LEGEND**
- Waste Dump Rehabilitated
 - DSO Pit and Tailing Dam Filled, and Main Pit Filling with Water

